

## The Facts:

# Dementia is Expected to Increase 35% in Essex over 10 years

Reaching **26,280** by 2027

Based on CFAS II Projections, people age 65+ figure for 2017



Estimated Dementia Population

Essex 2017: **19,470**

12,437 Female

7,033 Male

Based on CFAS II Projections, people age 65+ figure for 2017



## Every 3 minutes

Someone in the UK develops dementia

Matthews, F. E. et al. (2016) A two decade dementia incidence comparison from

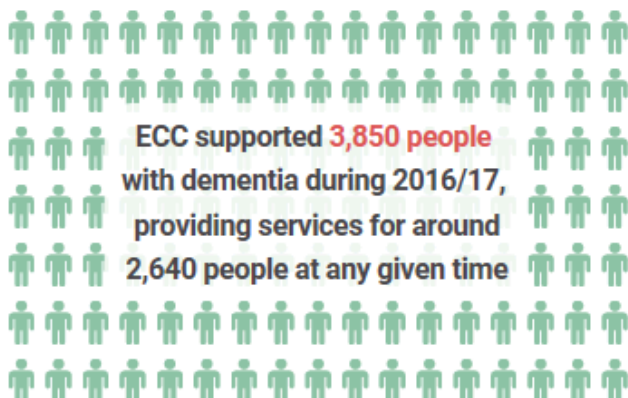
CFAS studies I and II

## Our Priorities:

- Prevention
- Finding Information & Advice
- Diagnosis & Support
- Living well with Dementia in the Community
- Supporting Carers
- Reducing the risk of crisis
- Living well in long term care
- End of Life
- A Knowledgeable and Skilled Workforce

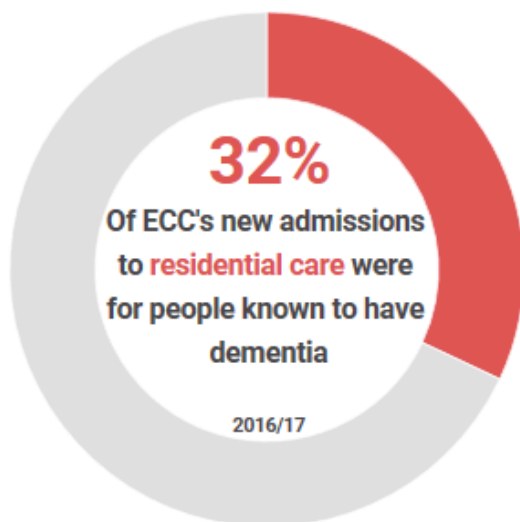
More information can be found in "Lets Talk about Dementia" Pan Essex Strategy - <https://www.livingwellessex.org/media/523329/Dementia-Strategy.pdf>

## In Essex:



Around **half** of older people with ECC **Day Care** services have dementia

ECC Day Opportunities File Audit 2015/16



**An estimated 1 in 3 people will care for someone with dementia in their lifetime**

Women and Dementia: a Marginalised Majority by Alzheimer's UK

## **The Current Provision:**

Community Support and Developing Dementia Friendly Communities - Enables the development of Dementia Action Alliances (DAA) and shaping the strategic response to Dementia across Essex. Work in communities will enable the evolution and sustainability of the Dementia Friendly network, developing partnerships that enable communities to design activities and environments that are inclusive to people living with dementia and increasing dementia friendly activity.

Through work with communities and the DAAs the service will promote a better understanding of dementia in communities reducing stigma and promoting independence for people living with dementia. The service provides the link between DAAs and the wider market to help drive forward quality in dementia care across Essex ensuring the voice of people living with dementia influences and shapes, developments, facilities and activities.

Family Navigation, Information & Support Service - Provides a single point of contact across Essex providing support, information and guidance to people living with dementia, carers & families helping to maintain their independence, improving their sense of well-being and putting them in control of their lives.

Navigators reach out to adults, families and carers in communities, working with them to understand their information and support needs, signposting people to care and support in the community.